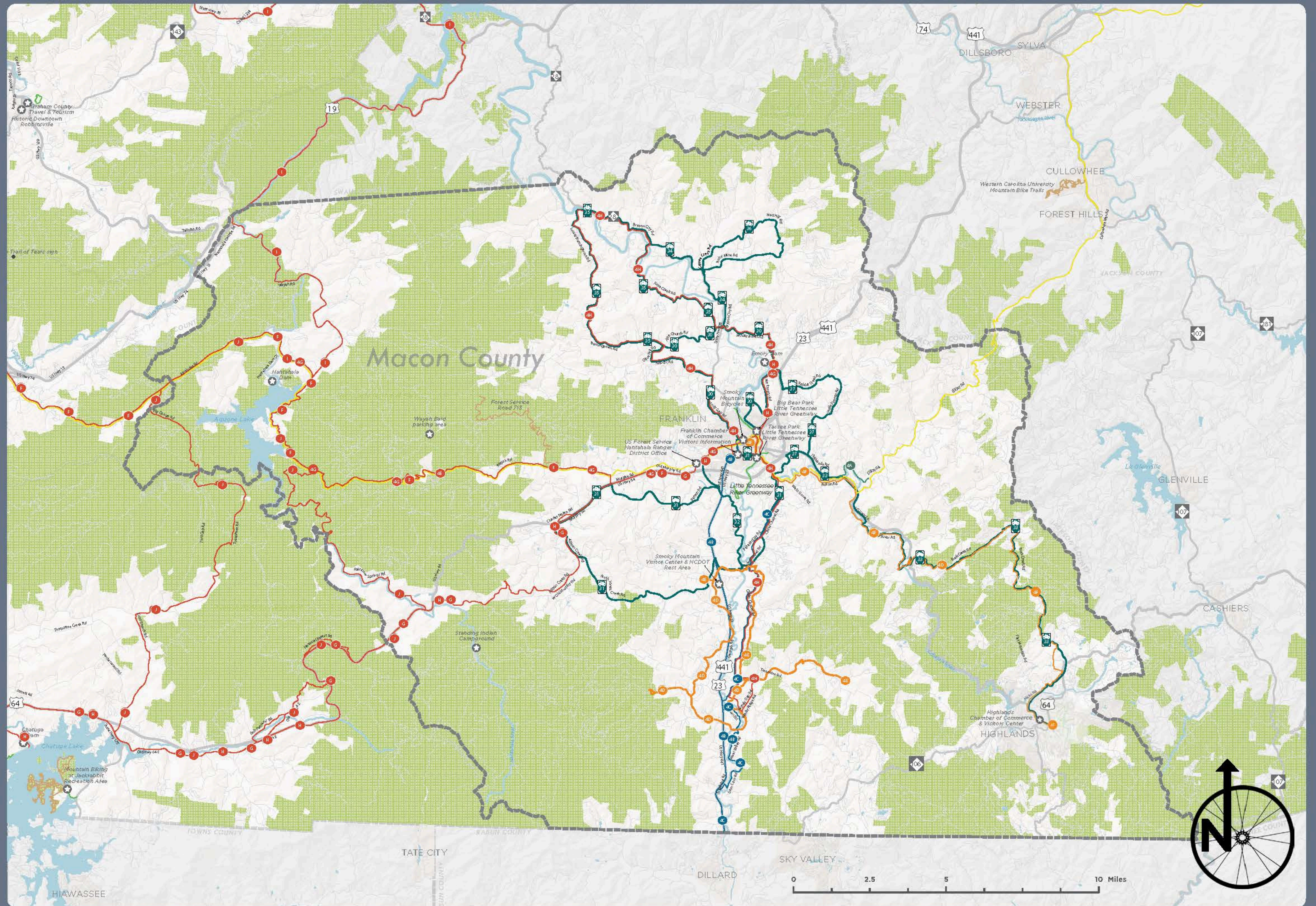


Macon County, NC Bike Map



CAUTION: The highlighted routes on this map follow roads of the North Carolina highway system, local streets and, in a few cases, paved greenways. Most of these roads do not include any special accommodations for bicycles, such as paved shoulders or bike lanes. Care has been taken to select more lightly traveled roads. In a few places, however, the routes use short segments of more heavily traveled roads to make connections where no alternative exists. These areas should be marked with "Share the Road" signs to alert motorists to the possible presence of bicyclists on the road. Some roads also carry higher volumes of traffic during commute times.



LEGEND

- Point of Interest
 - Water Body
 - Federal Lands
 - US Highway
 - NC Highway
 - Municipal Boundary
 - Macon County
 - Other County
- Route Letters & Numbers**
- Routes have a single letter if they cross county lines and are not associated with just one county.
- Routes that are all in or predominantly located all in one county have a number preceding the letter:
- 1 for Cherokee
 - 2 for Clay
 - 3 for Graham
 - 4 for Macon
- Bike Route Category**
- < 10 miles
 - 10 - 20 miles
 - 20 - 30 miles
 - > 30 miles
- Existing Bikeways**
- Greenway
 - Mountain Biking Trail
 - Mountains to Sea Bicycle Route
 - Signed Macon County Bicycle Route

MACON COUNTY BIKE ROUTES

Route	Name	Miles	Elev. Gain	Route Conditions	Skill Level
4A	SUCARFORK RECOMMENDED ALTERNATE TO NC#2	1.9	116	Shorter distance on High Traffic US 64 for quiet, scenic connection to State Bike Route #2.	NOVICE
4B	NC RTE#2 HIGHWAY CONNECTOR TO GA RTE#85	13.4	617	Very High Traffic, Good Sight Distance, Shared Lane north of Rest Area, Paved shoulder south of Rest Area.	INTERMEDIATE
4C	NC RTE#2 SCENIC TO GA RTE#85	15.5	1008	Moderate Traffic, Fair Sight Distance, Shared Lane	INTERMEDIATE
4D	COWETA LAB LOOP	19.8	1568	Short section on US 23-441. 1 unsignalized crossing of US 23-441. Light Traffic, Fair Sight Distance on 2-lane.	INTERMEDIATE
4E	YESSENTEE OUT AND BACK	17.6	1345	Cross US 23-441 twice at signal. Light Traffic, Fair Sight Distance on 2-lane.	INTERMEDIATE
4F	MAIN STREETS - FRANKLIN TO HIGHLANDS	25.6	3277	Steep, Light Traffic but Poor Sight Distance on Buck Creek Road. Dogleg crossing of US 64 has High Traffic.	ADVANCED
4G	TVA DAMS - NANTAHALA TO EMORY	30.1	2492	Light Traffic with Fair and some Poor sight distance on Waynes Road. Moderate Traffic closer to Franklin.	ADVANCED
4H	TOUR DE FRANKLIN - 53 MILE LOOP	53.4	3781	Moderate Traffic, Fair Sight Distance, Shared Lane	ADVANCED
F	MAIN STREETS - FRANKLIN TO ANDREWS	37.4	3713	Moderate Traffic tapers off to Light Traffic farther from Franklin. Mostly Fair but some Poor Sight Distance.	ADVANCED
G	MAIN STREETS - HAYESVILLE TO FRANKLIN	38	3453	Mixed, Low volume but High Speed Traffic on US 64; some shoulders have rumbles. W Old Murphy Rd is steep with Poor sight distance.	ADVANCED
H	TVA DAMS - EMORY TO CHATUOE	43.9	3571	Mixed, Low volume but High Speed Traffic on US 64; some shoulders have rumbles. W Old Murphy Rd is steep with Poor sight distance.	ADVANCED
I	TVA DAMS - FONTANA TO NANTAHALA	47.1	5026	High Traffic, Poor sight distance on NC 28 until 4-lane. High Traffic, Fair sight distance on US 19-74.	ADVANCED
J	WINDING RAINBOW TUSQUITTEE HALF GRAVEL GRINDER LOOP	59	6701	Gravel Grinder. 22 miles of unpaved Forest Service Roads open to traffic. US 64 has high speed traffic with Good sight distance.	ADVANCED