

CHEROKEE COUNTY NC BIKE MAP



ADDITIONAL RESOURCES

U.S. Forest Service
Tusquee Ranger District
123 Woodland Drive
Murphy, NC
(828) 837-2242
www.cherokee-county-thr.com

Cherokee County Chamber of Commerce
123 Woodland Drive
Murphy, NC
(828) 837-2242
www.cherokee-county-thr.com

Cherokee County Tourists Development Authority
191 Robbinsville Road
Andrews, NC
(828) 557-2583
www.visitcherokeecounty.com

NC DOT DIVISION 14
District 3 Office
191 Robbinsville Road
Andrews, NC
(828) 321-4105

Federal and State Lands

Great Smoky Mountain National Park
(865) 436-1200
www.nps.gov/grsm

Nantahala National Forest
(828) 257-4200
www.fs.usda.gov/main/nfntc

Visit the Division of Bicycle & Pedestrian Transportation's Website for maps of cross-state, regional, and local bicycle routes, additional information on laws and safety tips, a calendar of bicycle events and lists of North Carolina bicycle shops and clubs.
www.ncdot.gov/divisions/bike-ped

The county routes include loops or connectors that are designed for a wide range of abilities and desires. Green routes are less than ten miles long. Blue routes are from 10 to 20 miles, and Orange routes are from 20 to 30 miles. Red routes are over 30 miles long. Read the individual route profile for the road characteristics for each route.

Farming

Form life played a prominent role in the region's past, and the purpose of electric power generation and flood control. The impounded waters create lakes popular for many recreational pursuits. Other companies now own or maintain some of these dams, and this bicycle plan has linked them together in a connected loop of about 220 miles of bike routes – The TVA Dams.

Gravel Grinders

The Nantahala National Forest covers much of the land in these four counties, and the US Forest Service's roads make for some scenic mountain biking. Two Gravel Grinder routes are in the plan – Route A and Tomah's Gap Crossing, and Route J – Winding Rainbow Tusquee Loop.

Route Letter-Number System

Regional Bicycle Routes are noted in the plan with a single letter if they cross county lines and are not associated with just one county. This includes most of the Main Street Connector routes that tie all of the county seats together along with a few other principal towns. It also includes three of the TVA Dam routes and the Cherokee Route 3 Loop through three counties including Union County, Georgia.

Routes that are all in or predominantly located all in Cherokee County routes, 2 for Clay, 3 for Graham and 4 for Macon County.

The Main Street Connectors link these towns together with bicycle routes.

Tennessee Valley Authority Dams

The TVA built many dams in the early 20th Century for the purpose of electric power generation and flood control. The impounded waters create lakes popular for many recreational pursuits. Other companies now own or maintain some of these dams, and this bicycle plan has linked them together in a connected loop of about 220 miles of bike routes – The TVA Dams.

Gravel Grinders

The Nantahala National Forest covers much of the land in these four counties, and the US Forest Service's roads make for some scenic mountain biking. Two Gravel Grinder routes are in the plan – Route A and Tomah's Gap Crossing, and Route J – Winding Rainbow Tusquee Loop.

Route Letter-Number System

Regional Bicycle Routes are noted in the plan with a single letter if they cross county lines and are not associated with just one county. This includes most of the Main Street Connector routes that tie all of the county seats together along with a few other principal towns. It also includes three of the TVA Dam routes and the Cherokee Route 3 Loop through three counties including Union County, Georgia.

Routes that are all in or predominantly located all in Cherokee County routes, 2 for Clay, 3 for Graham and 4 for Macon County.



Bicycle Laws

In North Carolina, the bicycle has the legal status of an automobile, which means that bicyclists have full rights and responsibilities on the roadway and are subject to the same regulations governing the operation of a motor vehicle. Bicyclists are required to:

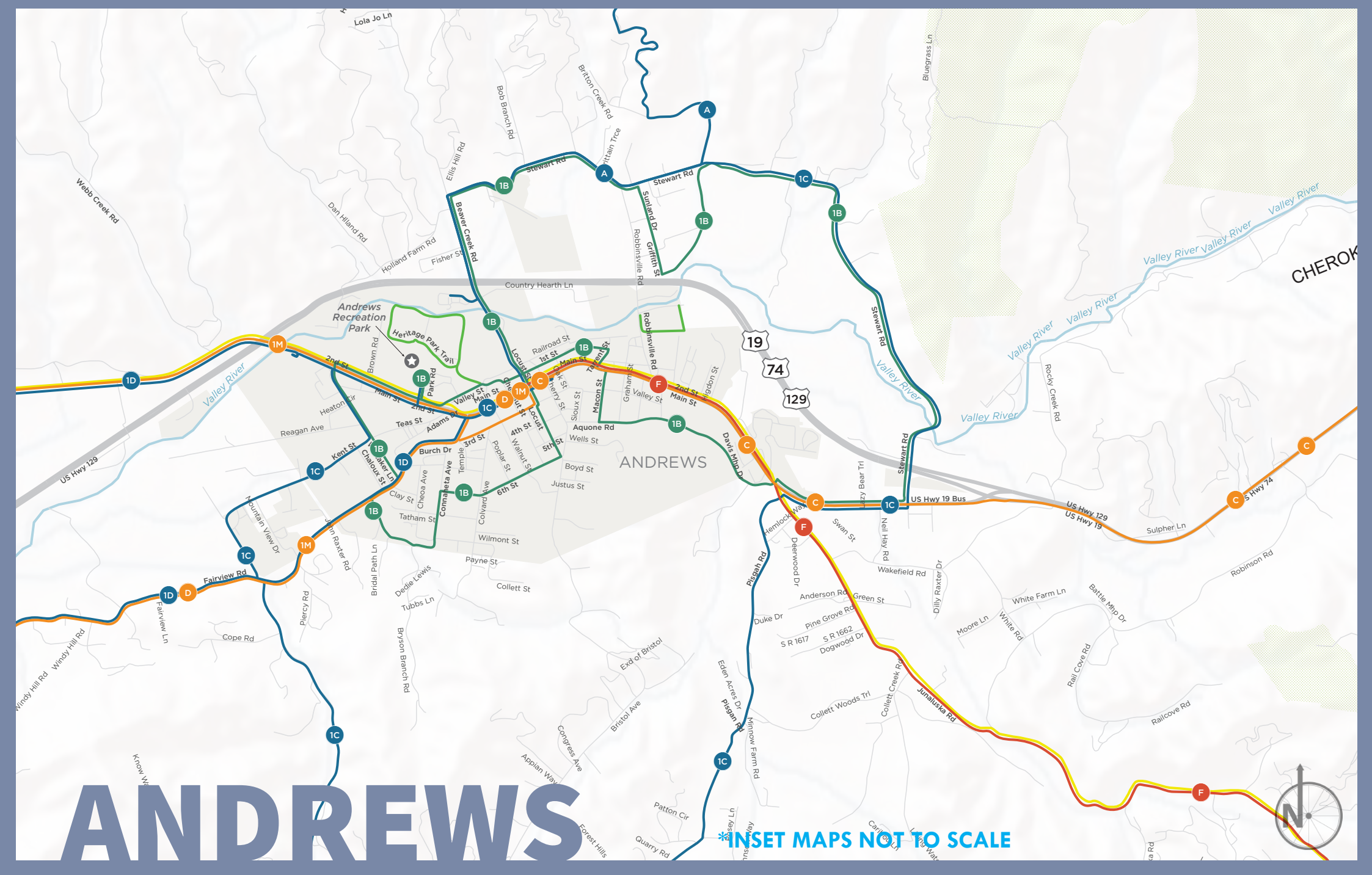
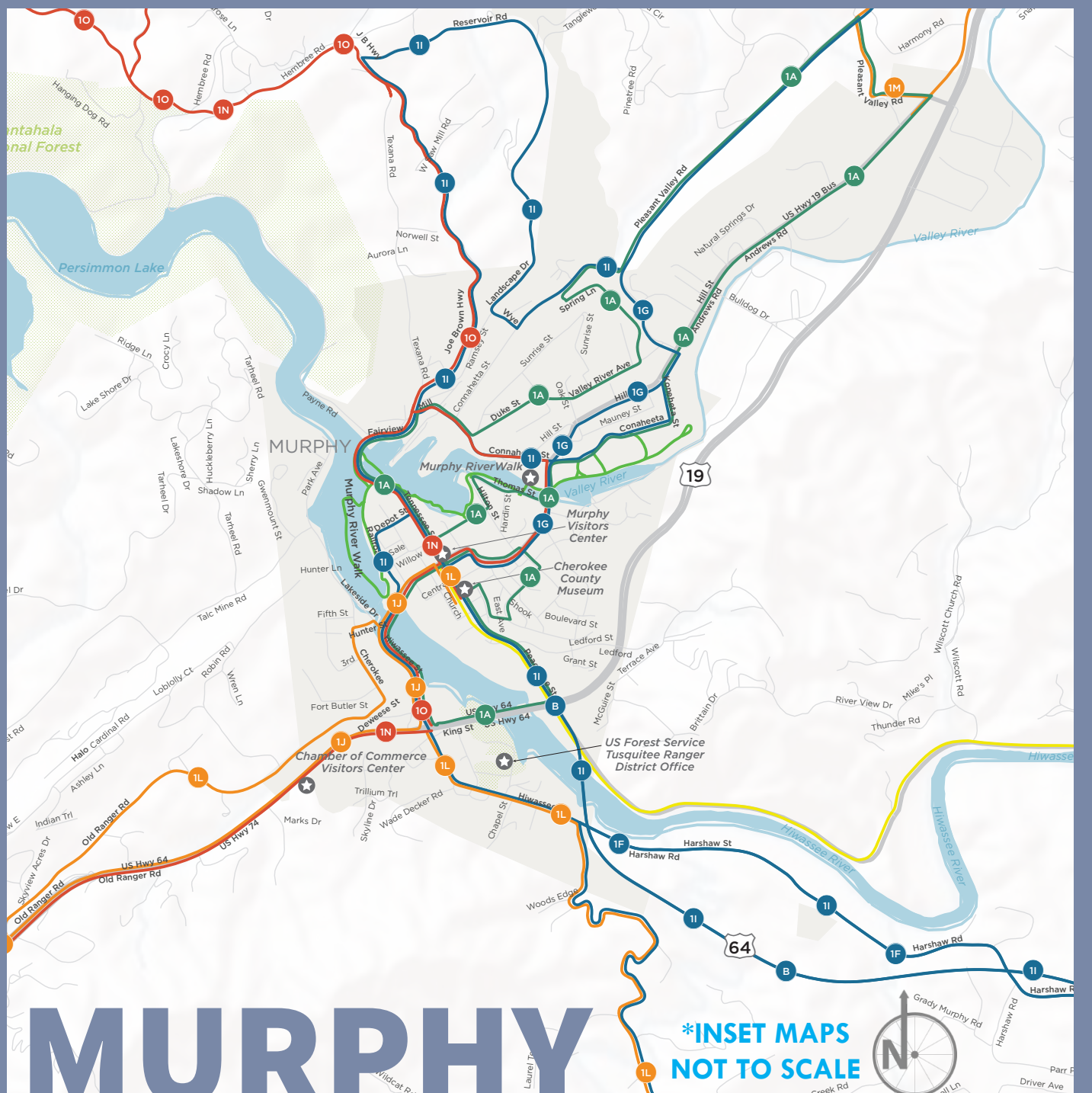
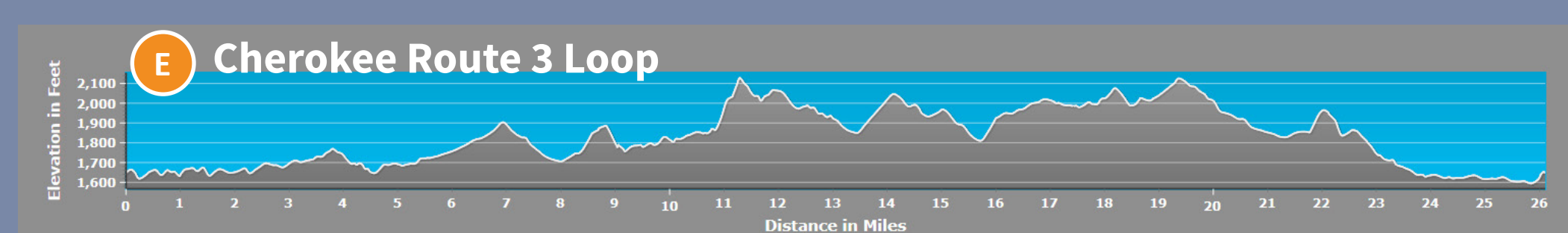
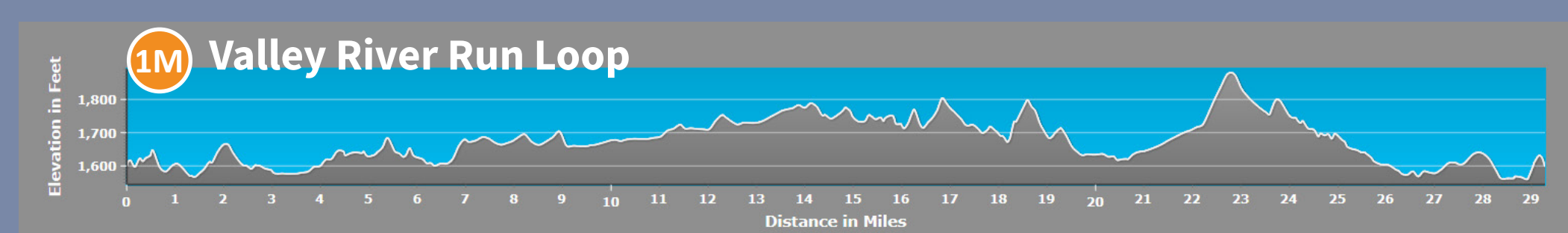
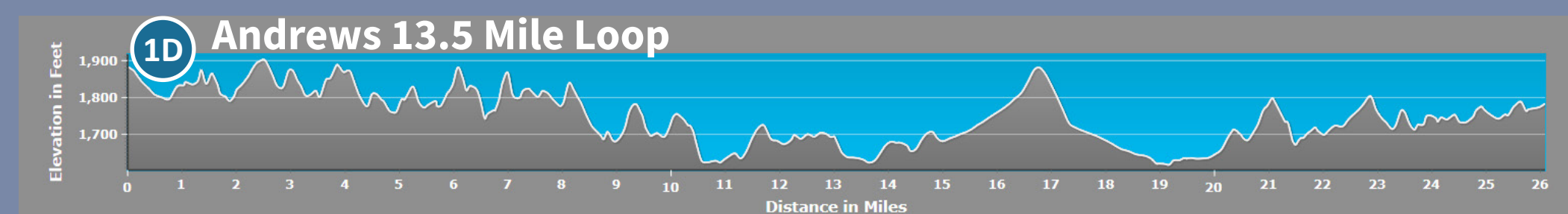
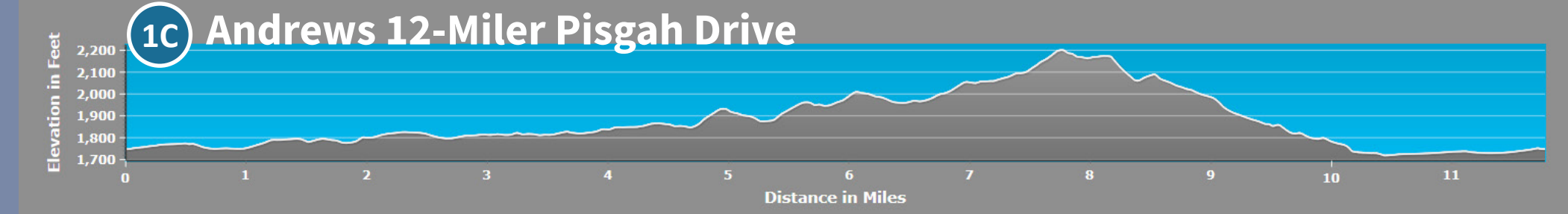
- Ride on the right in the same direction as traffic.
- Obey all traffic signs and signals.
- Use hand signals to communicate intended movements (in NC, pointing your right hand straight out can be used to indicate a right turn).
- Equip each bicycle for night riding with a front lamp and a rear red light that are visible from a distance of 300 feet.

In addition, when passing, drivers in North Carolina must provide at least 4 feet between vehicles and bicyclists.

Safety Tips

- Ride defensively and in a predictable manner.
- Wear a bicycle helmet every time you ride your bike.
- Avoid riding at night, if possible.
- Wear bright-colored clothes to increase visibility.
- Be courteous to other road users.
- Keep traffic flowing by helping motorists pass safely.

ROUTE ELEVATIONS



Bicycle Safety

Use the through lane to go straight, not the turn lane.

Make eye contact with motorists.

State Law: Bicycles yield to pedestrians.

STATE LAW
Yield to Peds
Bicycles must yield the right-of-way to pedestrians.

Ride in a straight line & avoid weaving.

State Law: Never ride against traffic.

STATE LAW
Never Ride Against Traffic
Bicyclists must ride in the same direction as motor vehicle traffic.

Biking on sidewalks can put you at risk, especially at driveways & intersections.

When necessary, use the entire travel lane. With narrow markings, ride through the center of the arrows.

STATE LAW
Bicycles must obey all traffic signs and signals.

At intersections, use the lane farthest to the right that points where you're going (this keeps you on the right for the next street).

STATE LAW
Front Light
Every bicycle must have a front light that is required at night.

Motorists: Pass at least 3 feet away for safety.

STATE LAW
Bicycles must signal their intentions.

Motorists: Pass at least 3 feet away for safety.

STATE LAW
Hand Signals
Bicyclists must use hand signals to indicate their intentions.

Watch for people in parked cars. Move outside of the door zone or slow down and pass carefully.

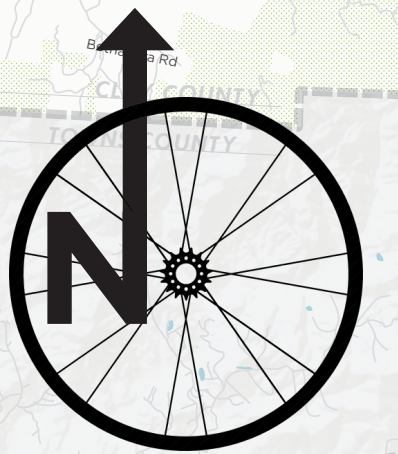
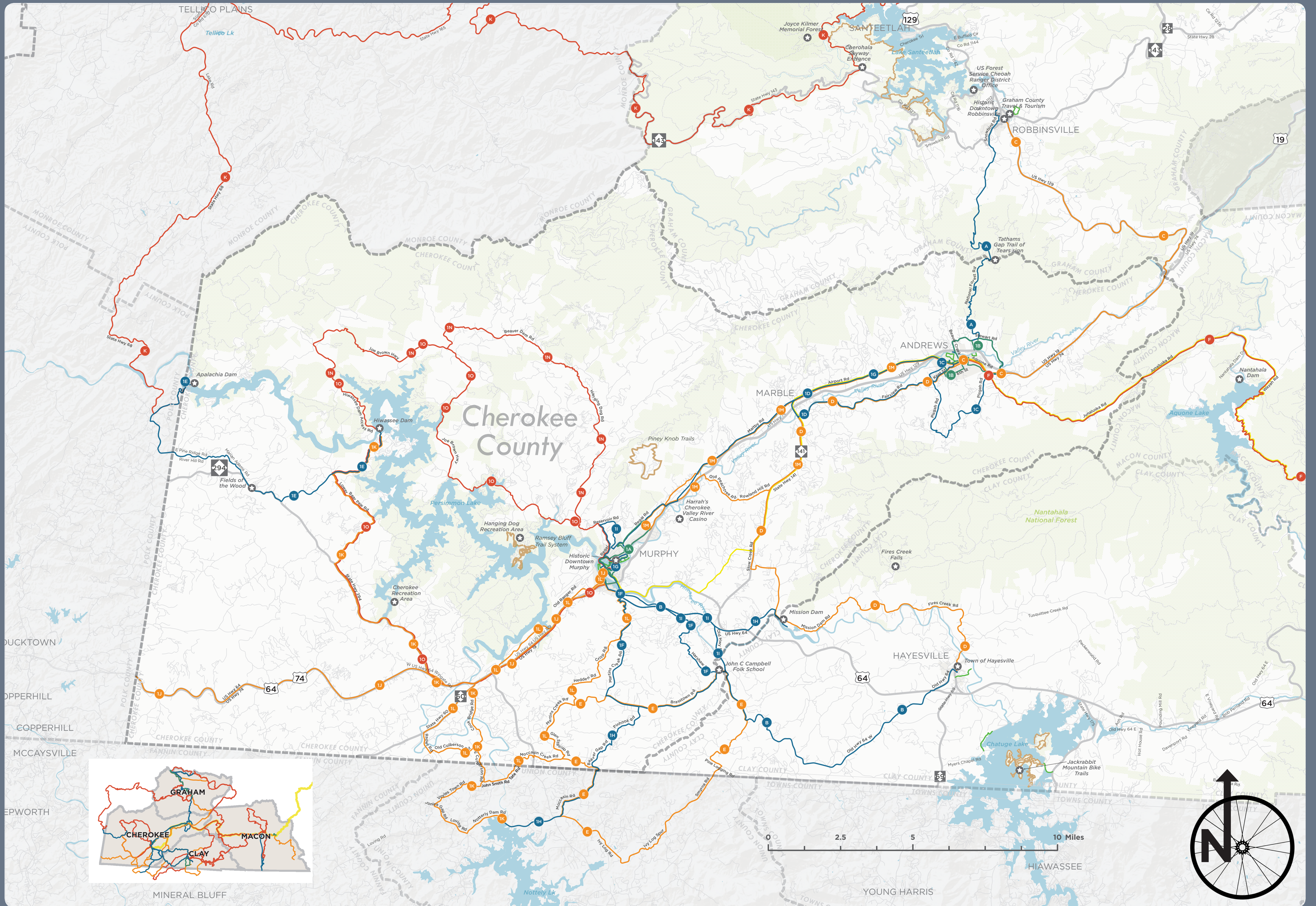
Be aware. Scan traffic ahead and behind you. Don't use audio devices that limit your hearing.

Graphic developed by Alta Planning + Design for the Albemarle RPO

Cherokee County, NC Bike Map



CAUTION: The highlighted routes on this map follow roads of the North Carolina highway system, local streets and, in a few cases, paved greenways. Most of these roads do not include any special accommodations for bicycles, such as paved shoulders or bike lanes. Care has been taken to select more lightly traveled roads. In a few places, however, the routes use short segments of more heavily traveled roads to make connections where no alternative exists. These areas should be marked with "Share the Road" signs to alert motorists to the possible presence of bicyclists on the road. Some roads also carry higher volumes of traffic during commute times.



LEGEND

ROUTES

- Point of Interest
- Water Body
- Federal Lands
- US Highway
- NC Highway
- Municipal Boundary
- Cherokee County
- Other County
- Bike Route Category**
 - < 10 miles
 - 10 - 20 miles
 - 20 - 30 miles
 - > 30 miles
- Existing Bikeways**
 - Greenway
 - Mountain Biking Trail
 - Mountains to Sea Bicycle Route

- Route Letters & Numbers**
- Routes have a single letter if they cross county lines and are not associated with just one county. Routes that are all in or predominantly located all in one county have a number preceding the letter:
- 1 for Cherokee
 - 2 for Clay
 - 3 for Graham
 - 4 for Macon

Route	Name	Miles	Elevation Gain	Route Conditions	Skill Level
1A	MURPHY TOWN RUNABOUT LOOP	8.4	498	High Traffic on US 19-64-74-129. Obey Traffic Signals. Moderate Traffic on US 19 Business.	NOVICE
1B	ANDREWS 8.7 TOWN LOOP	8.7	392	Pleasant. Higher traffic on US 19 Business. Two crossings of 4-lane at STOP signs.	NOVICE
1C	ANDREWS 12 MILER (PISGAH DRIVE)	11.8	702	Light Traffic, Fair Sight Distance, Shared Lane	NOVICE
1D	ANDREWS 13.5 MILE LOOP	13.5	608	Fair Sight Distance on Fairview Road. High speeds on Airport Road.	NOVICE
1E	TVA DAMS - HIWASSEE TO APALACHIA	14.5	1248	Moderate Traffic, Fair Sight Distance, Shared Lane	INTERMEDIATE
1F	CHEROKEE ROUTE 2 LOOP	14.9	1028	Mostly Light Traffic, Fair with some Poor Sight Distance. Moderate Traffic on NC 141.	INTERMEDIATE
1G	MAIN STREETS - MURPHY TO ANDREWS	15.8	696	Light and Moderate Traffic, mostly Good sight distance. Straight 2-lanes have higher speed traffic.	INTERMEDIATE
1H	TVA DAMS - MISSION TO NOTTLEY	16.7	1625	High Traffic on US 64 and GA 325. Mostly Fair, some Poor sight distance on route.	INTERMEDIATE
1I	MURPHY AND NEW US 64 LOOP	19.9	1725	Mixed. Paved shoulders with high traffic on US 64, poor sight distance on Harshaw near the Folk School.	INTERMEDIATE
1J	TENNESSEE CONNECTOR	20.9	1679	High Traffic, Good Sight Distance, Shared Lane	INTERMEDIATE
1K	TVA DAMS - NOTTLEY TO HIWASSEE	24.6	1844	High Traffic on GA 325, NC 294. Moderate Traffic, Fair sight distance, on Hiwassee Dam Road	INTERMEDIATE
1L	SOUTH CHEROKEE COUNTY LOOP	27.3	2179	High traffic with good shoulders on 4-lane. Left turn from US 64-74 to NC 60 needs care. Mostly Fair, some Poor sight distance on 2-lanes.	ADVANCED
1M	VALLEY RIVER RUN LOOP	29.4	1364	Mixed. High traffic on NC 141, rumbles on shoulder of US 19-74-129.	INTERMEDIATE
1N	CHEROKEE LOCAL ROUTE 1 LOOP	49.1	3910	High traffic w/no shoulders on 5-lane; good shoulders on 4-lane. Moderate traffic on NC 294. Some Poor sight distance on 2-lanes.	ADVANCED
1O	UPPER BEAR PAW JOE BROWN HIWASSEE DAM LOOP	52.8	3918	High traffic w/no shoulders on 5-lane; good shoulders on 4-lane. Moderate traffic on NC 294. Some Poor sight distance on 2-lanes.	ADVANCED
A	TATHAM'S GAP CROSSING	13.3	1939	Gravel Grinder. Eight miles of unpaved Forest Service Road open to traffic.	ADVANCED
B	MAIN STREETS - MURPHY TO HAYESVILLE	18.7	1415	High Traffic with Paved Shoulders on US 64, Moderate to Light Traffic with Fair Sight Distance on Secondary Roads.	INTERMEDIATE
C	MAIN STREETS - ANDREWS TO ROBBINSVILLE	20.4	1231	High Traffic throughout but with mostly Good sight distance.	INTERMEDIATE
D	MAIN STREETS - HAYESVILLE TO ANDREWS	26.2	1779	Mostly Light and Moderate Traffic, Fair Sight Distance. High Traffic on NC 141.	INTERMEDIATE
E	CHEROKEE ROUTE 3 LOOP	26.2	1952	Consistently Moderate Traffic, Fair and occasional Poor Sight Distance.	INTERMEDIATE
F	MAIN STREETS - FRANKLIN TO ANDREWS	37.4	3713	Moderate Traffic tapers off to Light Traffic farther from Franklin. Mostly Fair but some Poor Sight Distance.	ADVANCED
K	TVA DAMS - APALACHIA TO SANTEEELAH	72.9	9055	Moderate Traffic, Fair Sight Distance on State numbered routes.	ADVANCED